



# FernView Portal

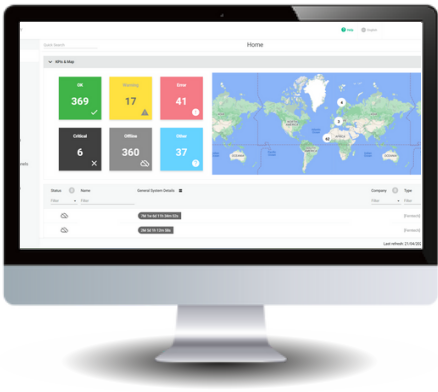
FernView is the industry-leading platform to remotely manage your portfolio and automate system operations to enable scale and save money.

The FernView web-based portal combines an intuitive status overview of all systems with granular, real-time analytics to quickly troubleshoot and take action.

With advanced controls features, FernView cuts O&M time, increases productivity, maximizes component lifespan and maximizes ROI.



## FLEET FEATURES



### System overview

Flexible aggregated view of systems with customizable KPIs.

### Aggregated events

All system events managed from a single page.

### Notifications

Receive customized system event notifications directly in Slack or e-mail.

### Data Export

Export data in CSV and create integrations via APIs with third-party software.

### Detailed analytics

Data analytics to calculate technical, financial, social and environmental key metrics across diverse portfolios.

### Reporting

Single and multi-system reporting tools.

### Preventive maintenance

Identify and trigger maintenance tasks thanks to advance data analytics (eg. soiling detection)



## AUTOMATIONS



Zero grid feeding



Load prioritization



Genset prioritization



Irrigation control



Battery charge/  
discharge targets



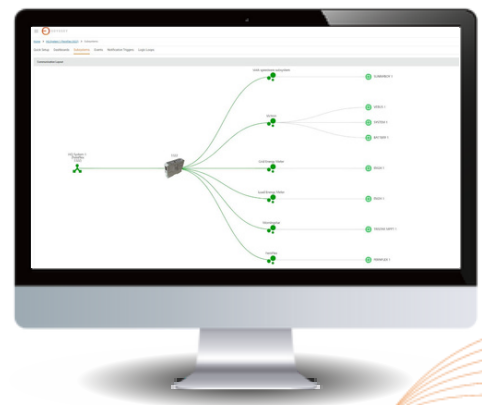
Climate control



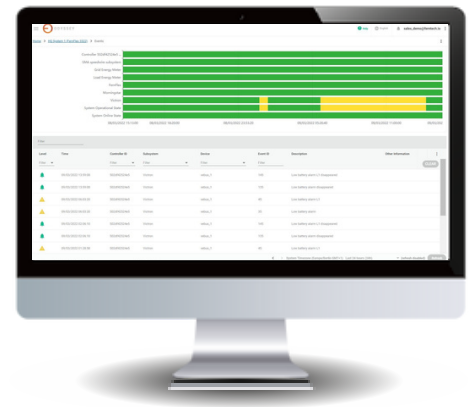
Grid support and  
stabilization

## SYSTEM FEATURES

- System layout diagram**  
Customisable infographic with overlaid real-time system values to immediately understand how a system is performing.
- Key performance indicators**  
Tailored KPIs using system performance values or customisable data, such as CO2 offsets
- System charts**  
Customisable system charts that allow a user to quickly assess system performance across all components
- Events page**  
List all events generated by all the system components to diagnose problems



- ✔ **Notification triggers**  
Customized email or Slack notifications sent when thresholds are reached
- ✔ **Device configuration**  
Change device configurations remotely and track history of changes made
- ✔ **Live mode**  
Real-time system data sent in 5 second intervals



## ADMIN FEATURES



### User management

Create an unlimited number of users and manage their rights.



### Company management

Manage sub-companies to logically organize systems and users.



### International platform

Current support for both English, Spanish, Portuguese and French



### White label

Brand the URL and the dashboard's frontend with your own name and logo.